



**METAL SOUND PROJECTOR  
BI-DIRECTIONAL**

**CELL10BT/EN**



This weatherproof sound projector is manufactured from epoxy coated high-grade aluminium extrusion with dual cone drive units, giving both clear speech and excellent background music reproduction.

Sturdy and rugged construction, designed for quick and easy installation, this makes it ideally suited for such places as shopping centres, railway stations and prisons etc.



**EN54-24:2008  
0905-CPR-00281  
TYPE B**

● <b>Standard</b>	Compliant to EN54-24 Compliant to BS5839:8
● <b>Electrical</b>	
Rated power, Watts	20
Tappings 100 Volt line, Watts	20/10/5/2.5
Transformer Impedance, Ohms 100 Volt	500/1k/2k/4k
Tappings 70.7 Volt line, Watts	10/5k/2.5/1.25k
Driver impedance, Ohms	4
Effective Frequency Range, Hz (BSEN60268-5)	120-18,000
S.P.L. @ 1 m, 1 Watt, dB, Octave, 100 Hz-10 kHz	88
S.P.L. @ 1 m, Full power, dB, Octave, 100 Hz-10 kHz	101
S.P.L. @ 4 m, 1 Watt, dB, 1/3 Octave, 100 Hz-10 kHz	68
S.P.L. @ 4 m, Full power, dB, 1/3 Octave, 100 Hz-10 kHz	81
Dispersion at 1k/2k Hz, Degrees	158/222 Horizontal 130/211 Vertical
● <b>Environmental</b>	
IP Rating	55
Min/Max amb temp	-25°C to 70°C
Relative humidity	≤95%
● <b>Mechanical</b>	
Dimensions, WxHxD mm	230 x 192 x 174
Net weight, kg	2.4
Colour (Unless Specified)	White, RAL9016
Material	Aluminium
Mounting	Aluminium bracket base with screw x 2
Safety	Ceramic Block Thermal Fuse



**ATEIS Europe B.V.**  
Celsiusstraat 1, 2652 XN Lansingerland, Netherlands  
Phone +31 (0)10 208 86 90, [www.ateis-europe.com](http://www.ateis-europe.com), [info@ateis-europe.com](mailto:info@ateis-europe.com)

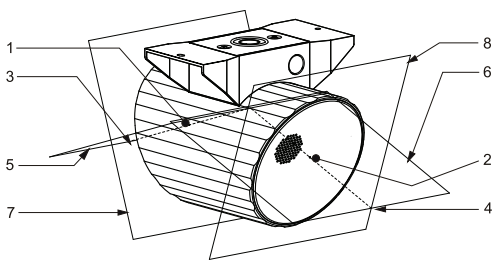
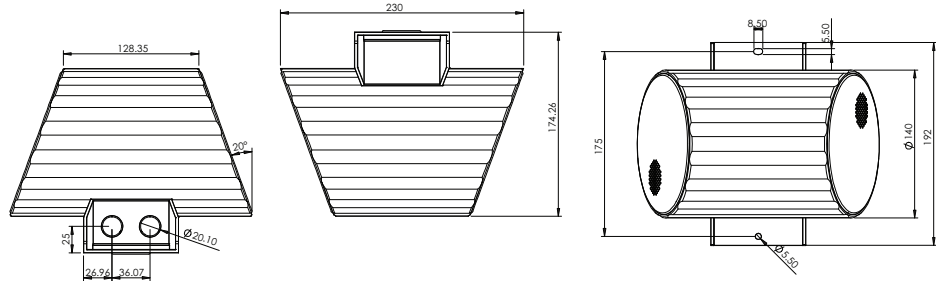




# INSTALLATION GUIDE

## CELL10BT/EN

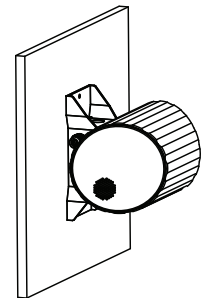
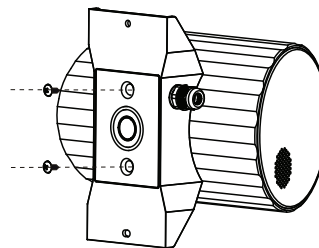
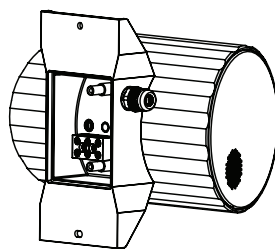
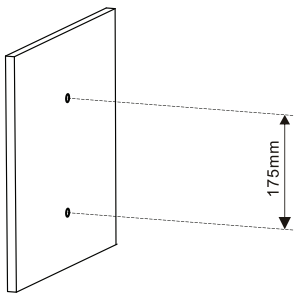
EN54-24:2008  
0905-CPR-00281  
TYPE B



1. Loudspeaker enclosure
2. Loudspeaker enclosure
3. Reference axis 1
4. Reference axis 2
5. Horizontal plane 1
6. Horizontal plane 2
7. Reference plane 1
8. Reference plane 2

With Transformer:  
100V/70V line

	White wire plus tapping				Black
100V	2.5W	5W	10W	20W	COM
70V	1.25W	2.5W	5W	10W	COM
IMP (Ω)	4K	2K	1K	500	



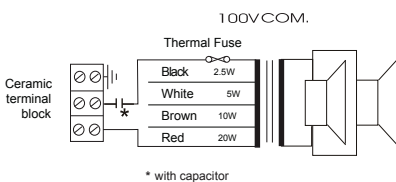
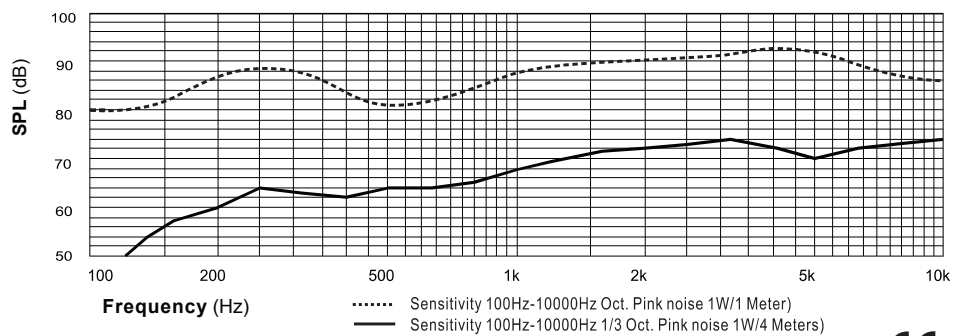
1) Select a suitable position to mount the loudspeaker. Offer the speaker to the wall or ceiling and mark through the mounting holes to position the fixing points. Use a spirit level to ensure that the speaker will be level when fixed. Drill 2 holes, 174mm apart. Use suitable raw plugs to secure the fixings.

2) Remove the rear termination cover from the speaker by removing the 2 screw fixings. Terminate the speaker cabling into the terminal block via suitable cable glands. Select the correct tapping when terminating the speaker. See the circuit diagram above.

3) Once the speaker has been wired replace the rear termination cover using the 2 fixings provided. The speaker can now be positioned over the fixing holes made in the mounting surface at Step 1.

4) Use suitable fixings to hold the speaker securely to the surface. The speaker installation is now complete.

### Frequency response



**Circuit Diagram**

Disclaimer: We reserve the right of changes and errors.



**ATEIS Europe B.V.**  
Celsiusstraat 1, 2652 XN Lansingerland, Netherlands  
Phone +31 (0)10 208 86 90, [www.ateis-europe.com](http://www.ateis-europe.com), [info@ateis-europe.com](mailto:info@ateis-europe.com)

