

METAL SOUND PROJECTOR

CELL10/T

This elegant, high-quality sound projector is made of extruded aluminum coated with plastic. The robust construction ensures high protection against vandalism and makes it suitable for use in shopping centers, railway stations, prisons, etc. The specially treated chassis provides excellent speech intelligibility as well as excellent reproduction of background music.

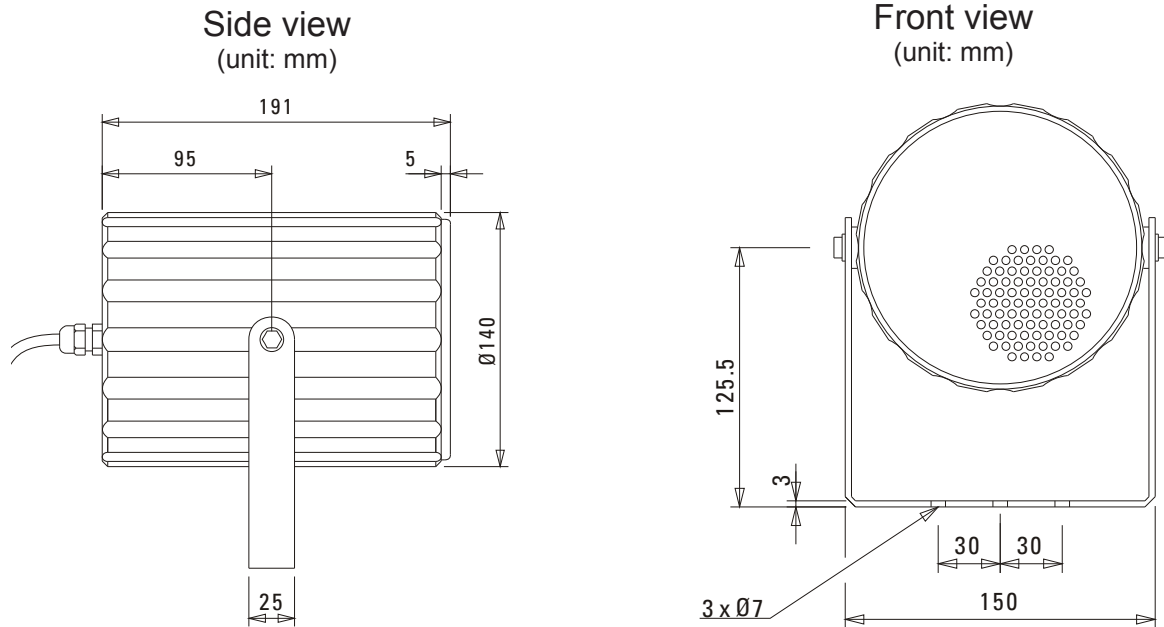


● Electrical	
Rated power, watts	10
Tappings 100 volt line, watts	10/5/2.5/1.25
Transformer Impedance, ohms 100V	1k/2k/4k/8k
Tappings 70.7 volt line, watts	5/2.5/1.25/0.625
Driver impedance, ohms	8
Effective Frequency Range, Hz (BSEN60268-5)	120-18,000
S.P.L. @ 1m, 1 watt, dB, Test Signal Bandwidth 100Hz - 10 KHz	88
Effective Frequency range Hz (BSEN60286-5) +/- 3 dB	100-15000Hz
S.P.L. @ 1m, 1 watt, dB, Test Signal Bandwidth 100Hz-10 kHz	91
S.P.L. @ Full power Octave Bandwidth, dB	101
Acoustic power (dB-PWL @ 1 watt) 1k/2k Hz, dB	87/90
Dispersion at 1k/2k Hz, Degrees	180/120
Directivity Axial Q factor, 1k/2kHz	2.8/5.9
● Environmental	
IP Rating	55
Min/Max amb temp	-25°C to 70°C
Relative humidity	n/a
● Mechanical	
Dimensions, front and depth, mm	140x191
Net weight, kg	1.9
Colour/Finish	White RAL9016
Material	Aluminium with Stainless Steel hardware
Mounting	Aluminium U bracket Supplied with 300mm, 5 core, non-fire rated cable tail



INSTALLATION GUIDE

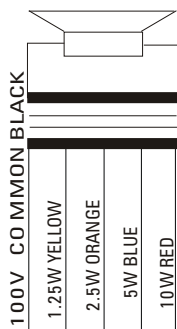
CELL10/T



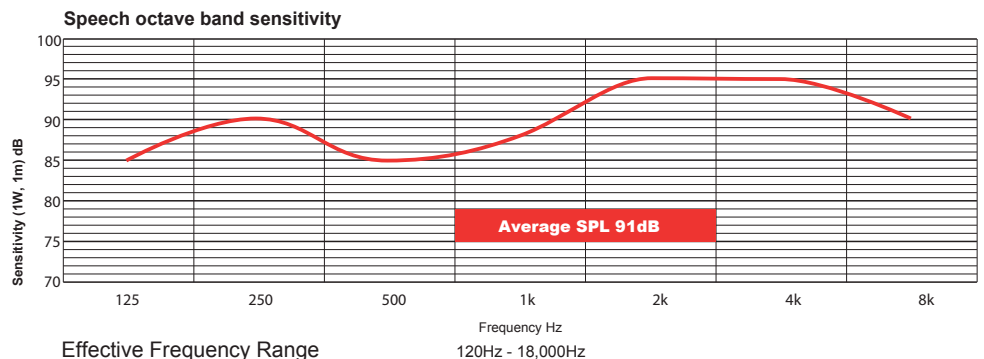
1) Drill the mounting location holes for the loudspeaker inline with the "U" bracket (2 holes 30 millimetres apart) in the surface where the loudspeaker is going to be located. It is not necessary to use the central mounting hole in the bracket unless the loudspeaker is used with a pole mount clamp.

2) Secure the cable gland tight, ensuring that all the rubber washer are in place for the fixing screws.
You will observe that around the inner section of the chamber where the back lid was removed a large rubber washer, please make sure that this is in-place when re-locating.

3) Before putting 100 volt line through the units it is advisable to check the impedance of the circuit.
4) On checking the line impedance the speaker is in an operational mode.



Circuit Diagram



Disclaimer: We reserve the right of changes and errors.



ATEIS Europe B.V.
Celsiusstraat 1, 2652 XN Lansingerland, Netherlands
Phone +31 (0)10 208 86 90, www.ateis-europe.com, info@ateis-europe.com

