

PEI TEL

PTCarPhone 6

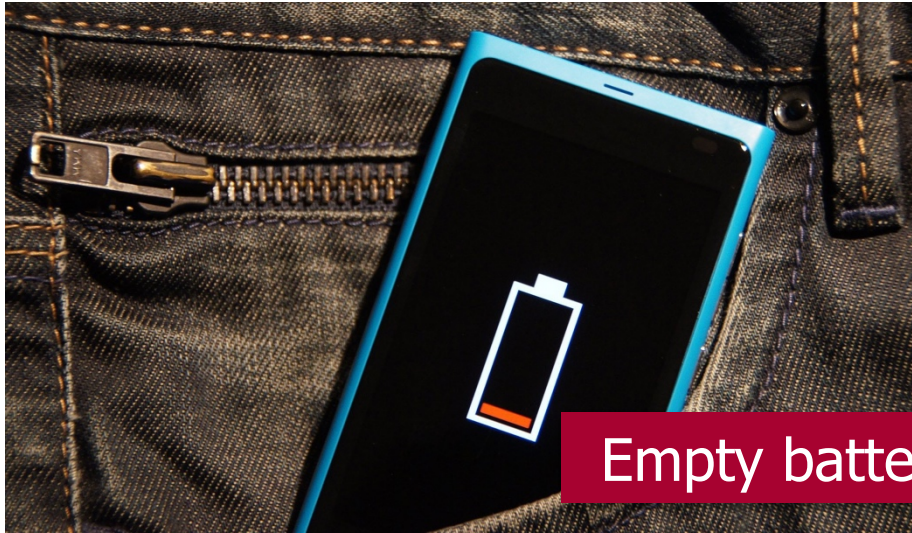
The First LTE Car Phone
with Telematics Features for
Fixed Installation

NEW

www.peitel.de



Do you know that?



Empty battery



Broken device



Stolen device



No signal

- Administrative effort for getting a new device
- Costs of a new device
- Setting up a new device → approx. 1 h of work
- Loss of data and possible image damage
- SIM card blocking at the network provider (in case of theft), etc.

- Driver not available
- Delivery unnecessarily delayed
- Unsatisfied customer
- Termination of the journey (driving time exceeded), etc.



- Perfect reception due to connections for external antennas
- Excellent voice and audio quality
- Stand-alone system with SIM card tray
- Removable handset for discreet phone calls
- Individual adjustable restrictions
 - Incoming and outgoing calls
 - SMS messages
 - Phone number restriction (FDN function)
- Reachability does not depend on the phones battery
- Very safe from theft, loss or defect
- Enables several individual functions via digital I/O ports



- LTE / VoLTE in Europe and North America
- WiFi hotspot – Share your mobile internet connection
- Integrated GPS module
 - Position location
 - Route recording
 - Geofencing, and much more
- Compatible with BRIDGE - the new web platform
- Extensive range of accessories
- 6 digital I/O ports (inputs and outputs)
- Also available as a fully integrated solution - PTVoiceBox 4G



Lte/4G

GPS

HOTSPOT ((•))



The First LTE Car Phone with Telematics Features for Fixed Installation

- LTE with multi-antenna technology
- Even better reception than the predecessors
- Two SMA connections for "LTE MIMO antenna"
- VoLTE support → significantly better voice and audio quality, both in hands-free mode and in private mode with the handset



WiFi Hotspot - Share your Mobile Internet Connection via WiFi

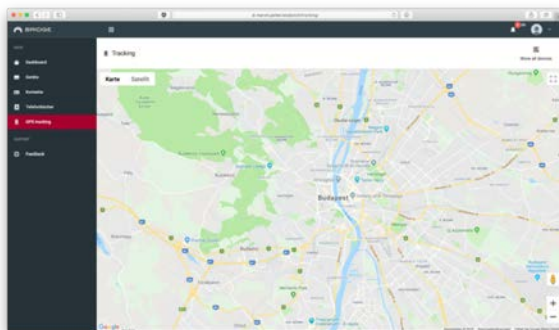
- Mobile wireless internet access
- Perfect for mobile (e.g. laptop, tablet) or stationary devices (e.g. vehicle computers)
- Up to 10 devices at the same time
- Various wireless security settings (as secure as your home network)



Integrated GPS Module

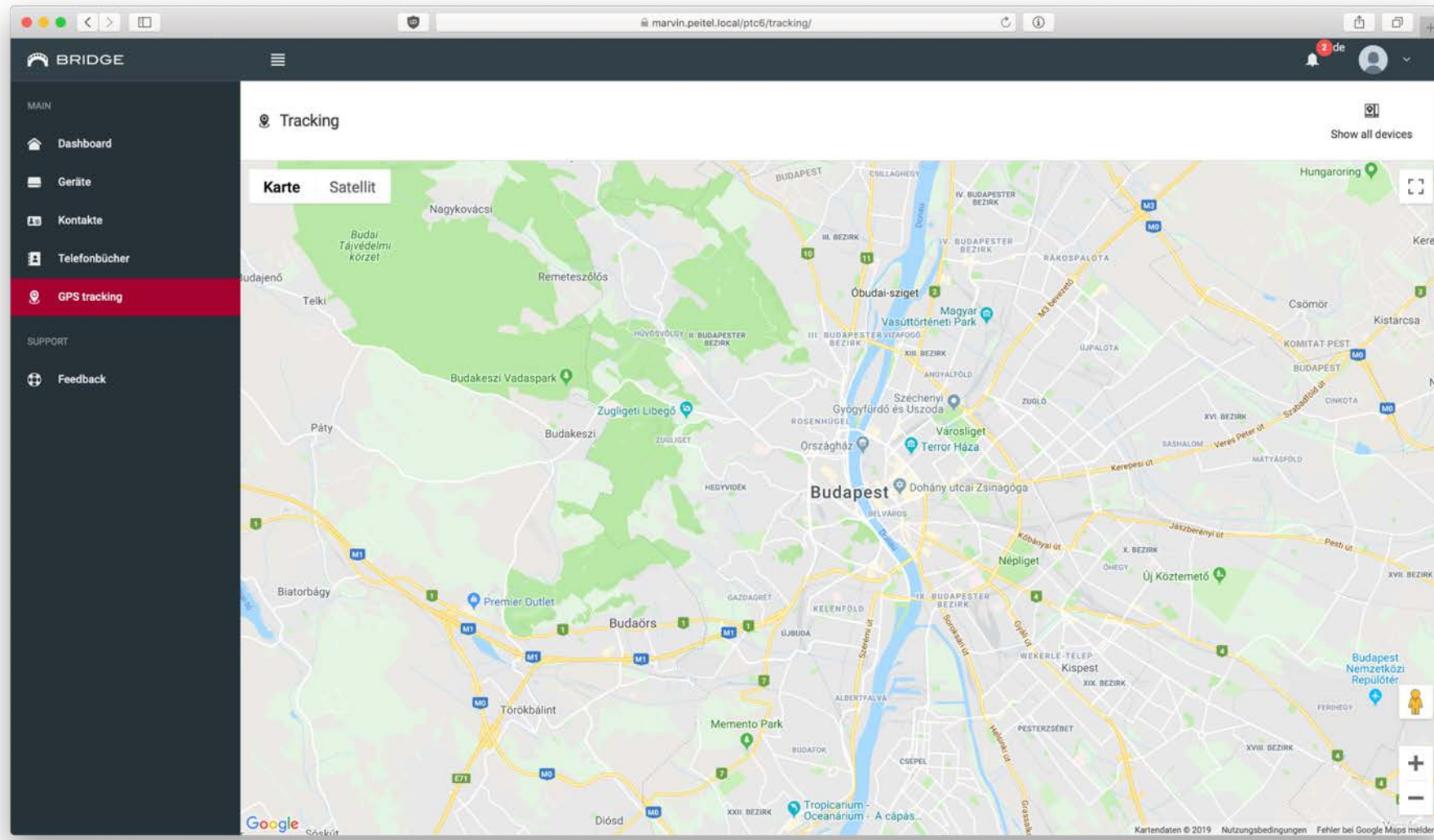
- Standard equipment of the PTCarPhone 6
- Enables various telematics functions, e.g.:
 - Position location
 - Route recording
 - Geofencing
 - and much more

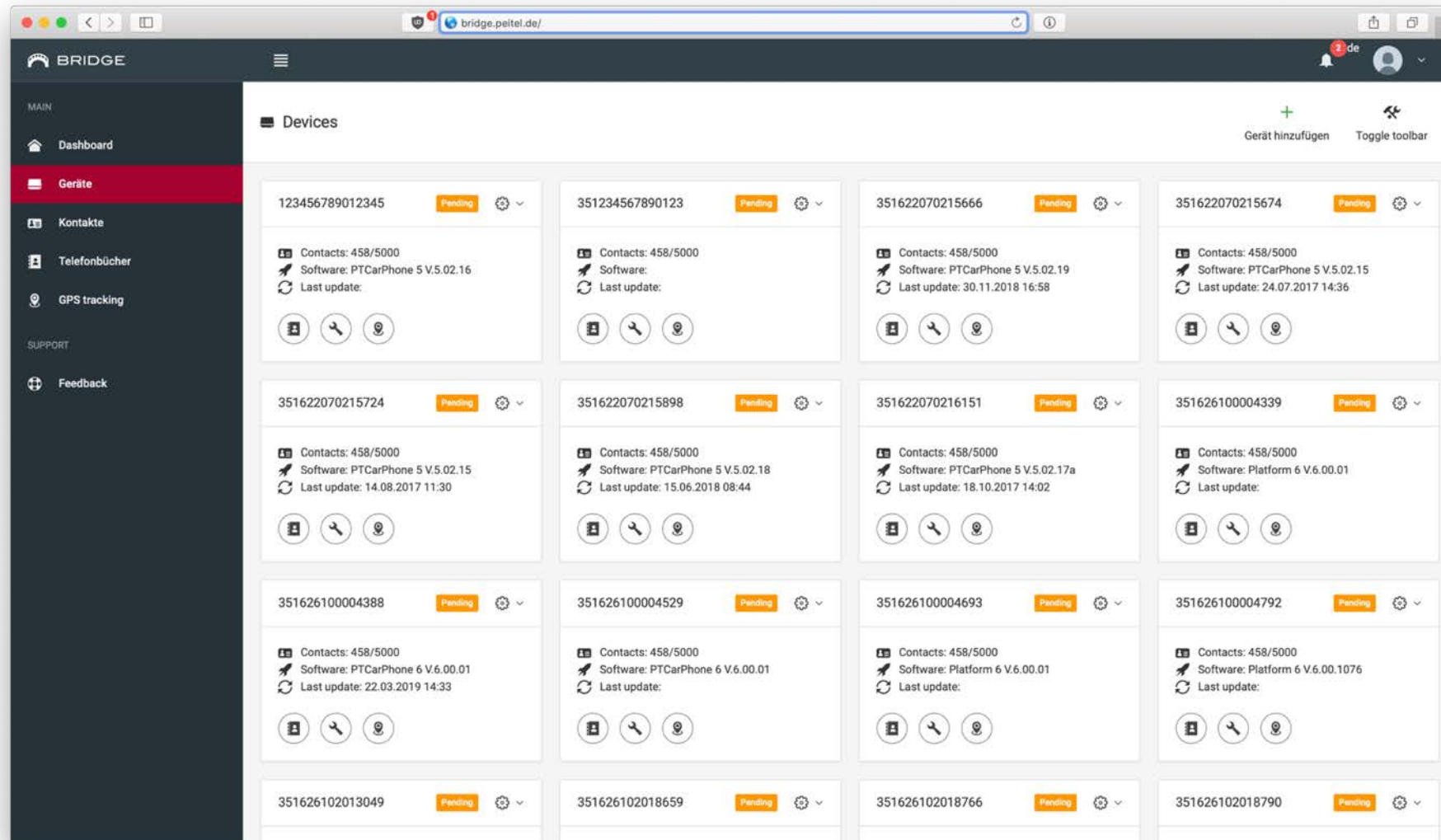
BRIDGE

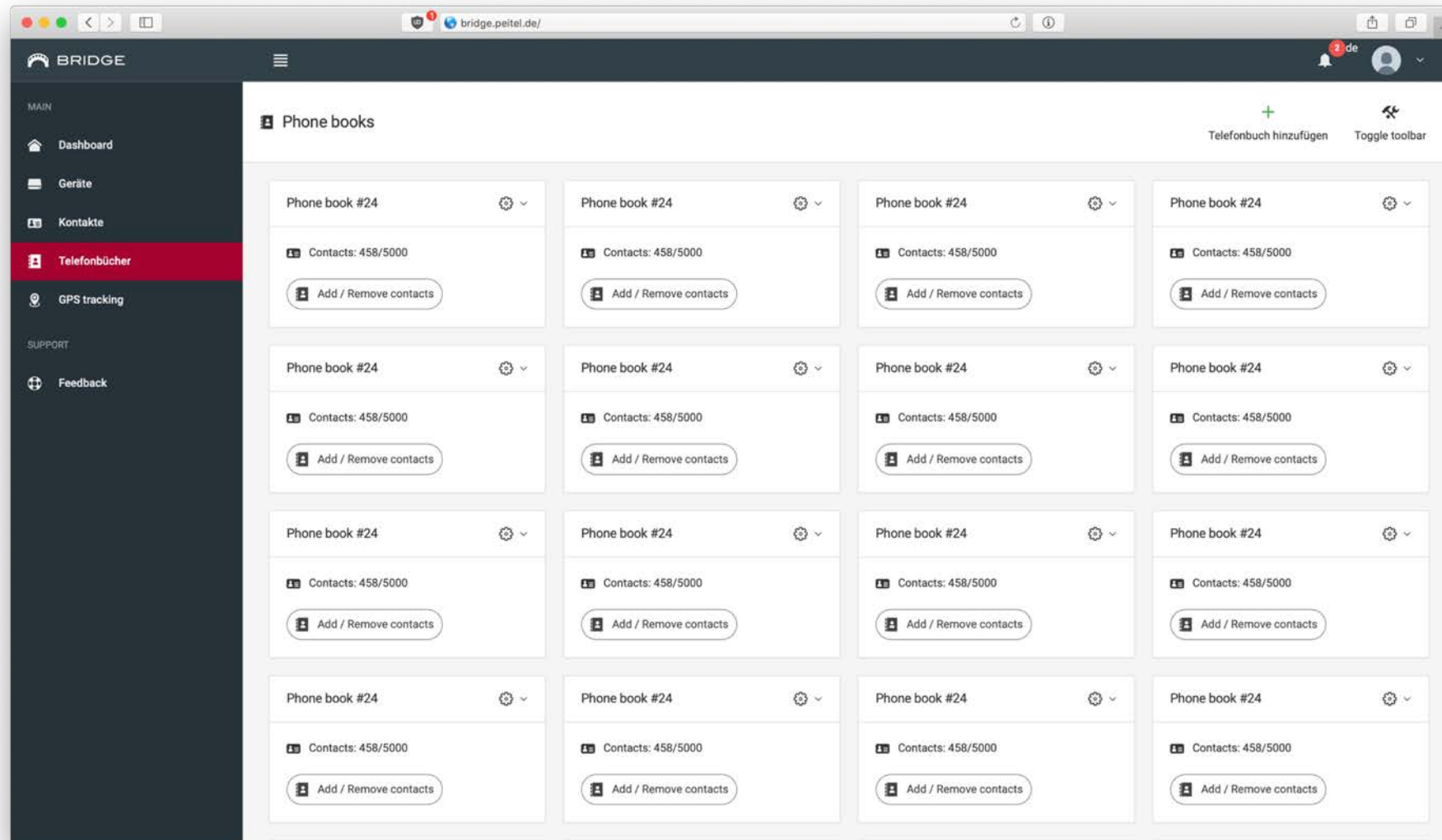


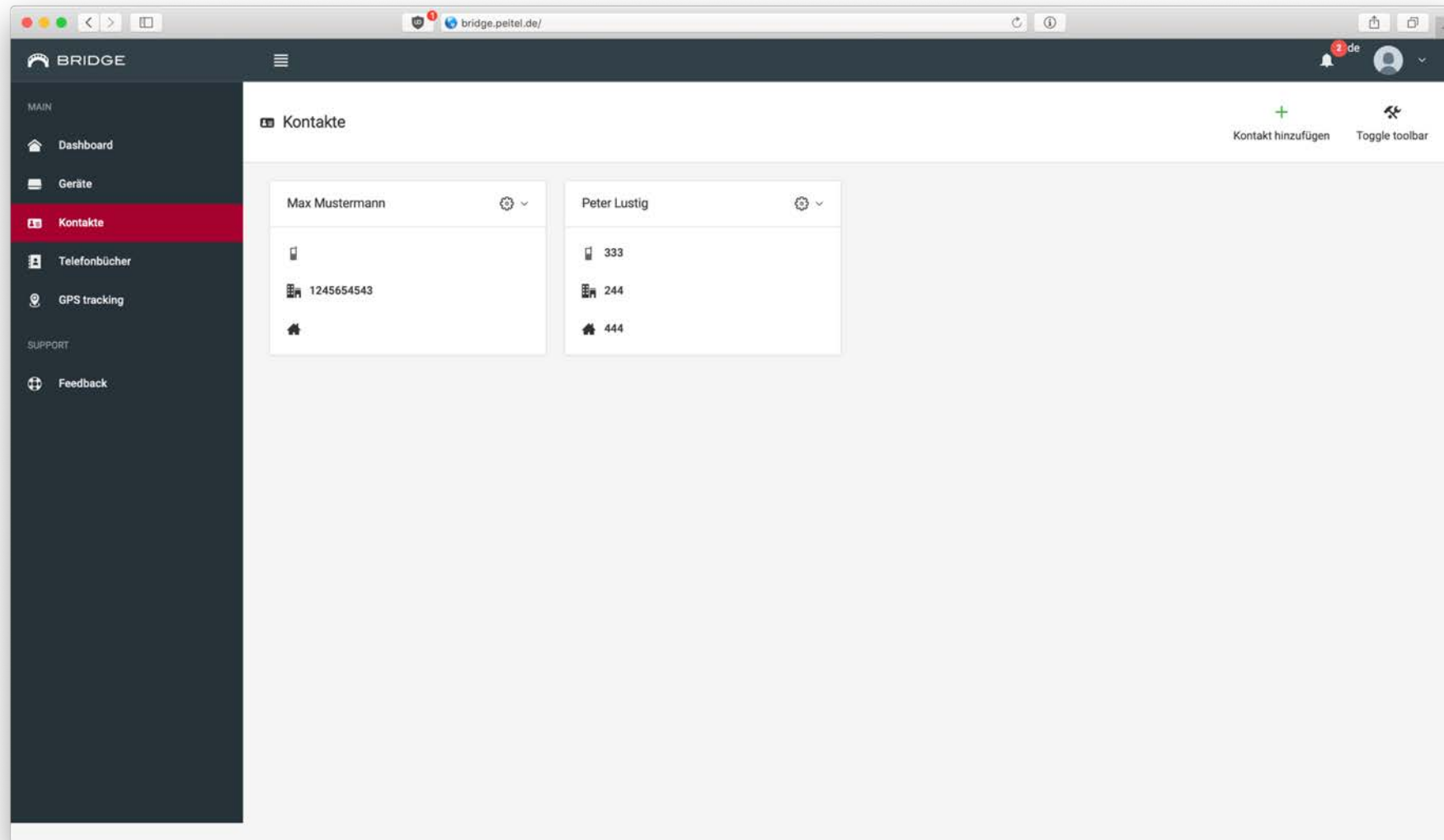
BRIDGE – the New Web Platform

- Remote management of device settings and the phonebook
- Accessible via web browser; also possible via mobile devices (smartphone)
- Complete free of charge
- Supports PTCarPhone devices of the 5th and 6th generation
- Early access with Early Access Program → <https://bridge.peitel.de/en>











Opens Up new Possibilities for Vehicles with Separate Cabins

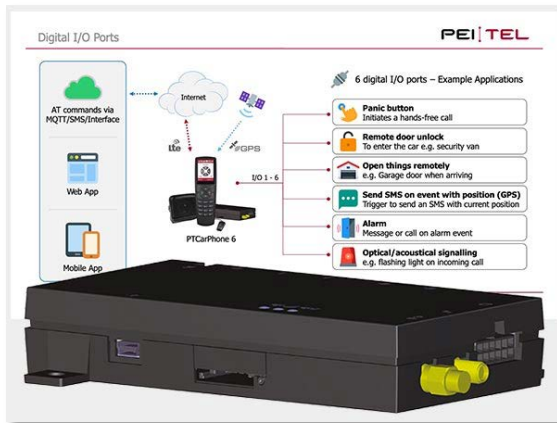
- Call forwarding from one handset to another
- Intercom function - interference-free communication between the driver's cab and the treatment room; hands-free calling for drivers
- Also ideal for motorhomes
Driver's cab: Hands-free calling while driving
Living space: Telephony via handset in the living area





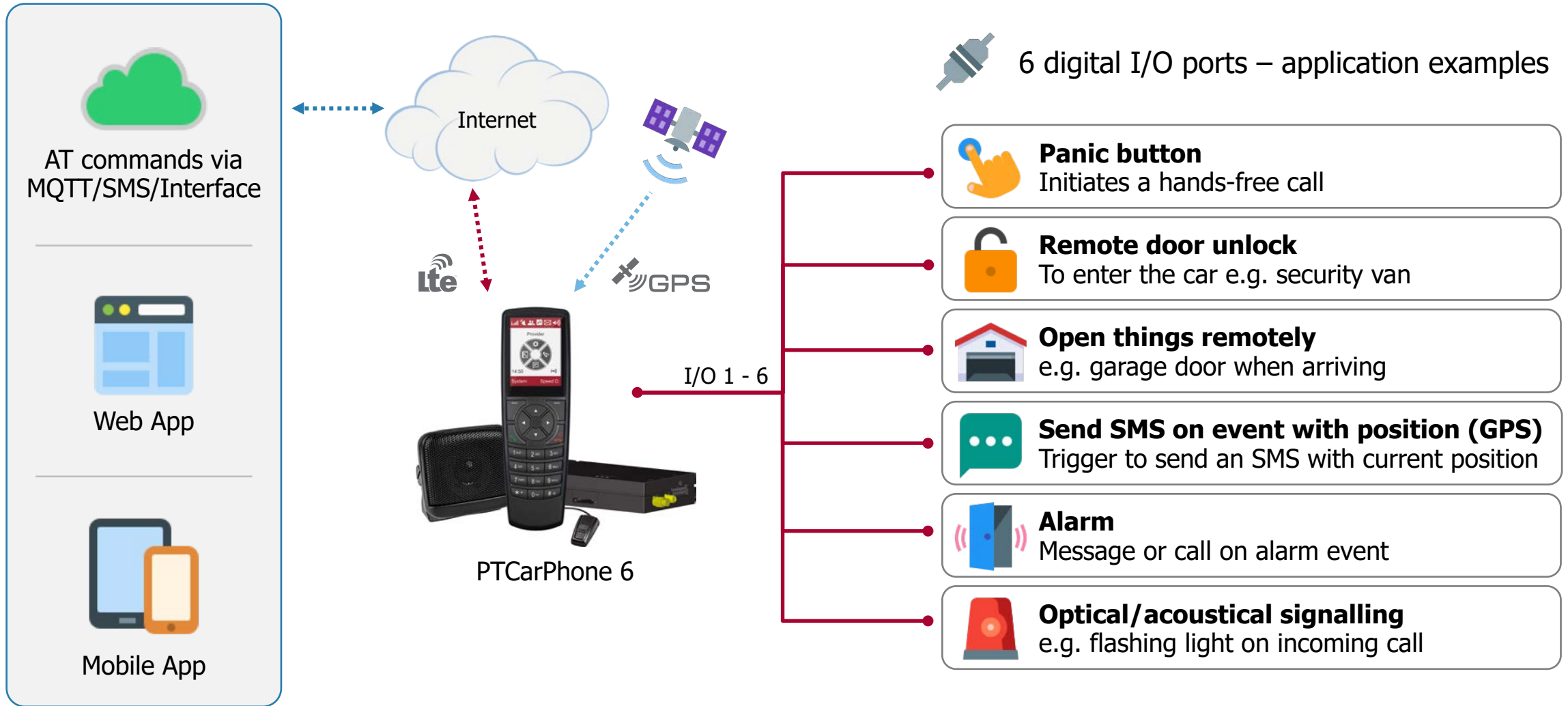
Extensive Range of Accessories

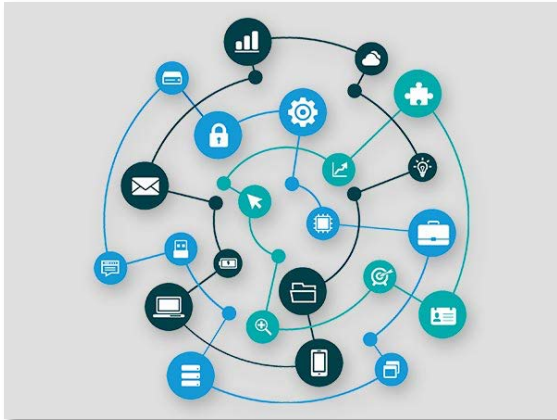
- Extension cords, speakers, hands-free microphones and gooseneck microphones, PTT button, etc.
- Control unit BE59 - fixed control panel; Phone calls only in hands-free mode
- Headset Unit (HSU) - headset adapter cable and headset with microphone mute switch



I/O Ports – Digital Inputs and Outputs

- Countless options for controlling, signalling and controlling external devices
- Example: Panic or emergency button
When pressed, an SMS is unnoticeably sent to a previously defined number and a call is established
- Realization of PTT functionality (push-to-talk) in group and conference calls
- Remote control and adjustment via BRIDGE (<https://bridge.peitel.de/en>) possible





Fully Integrated Solution - PTVoiceBox 4G

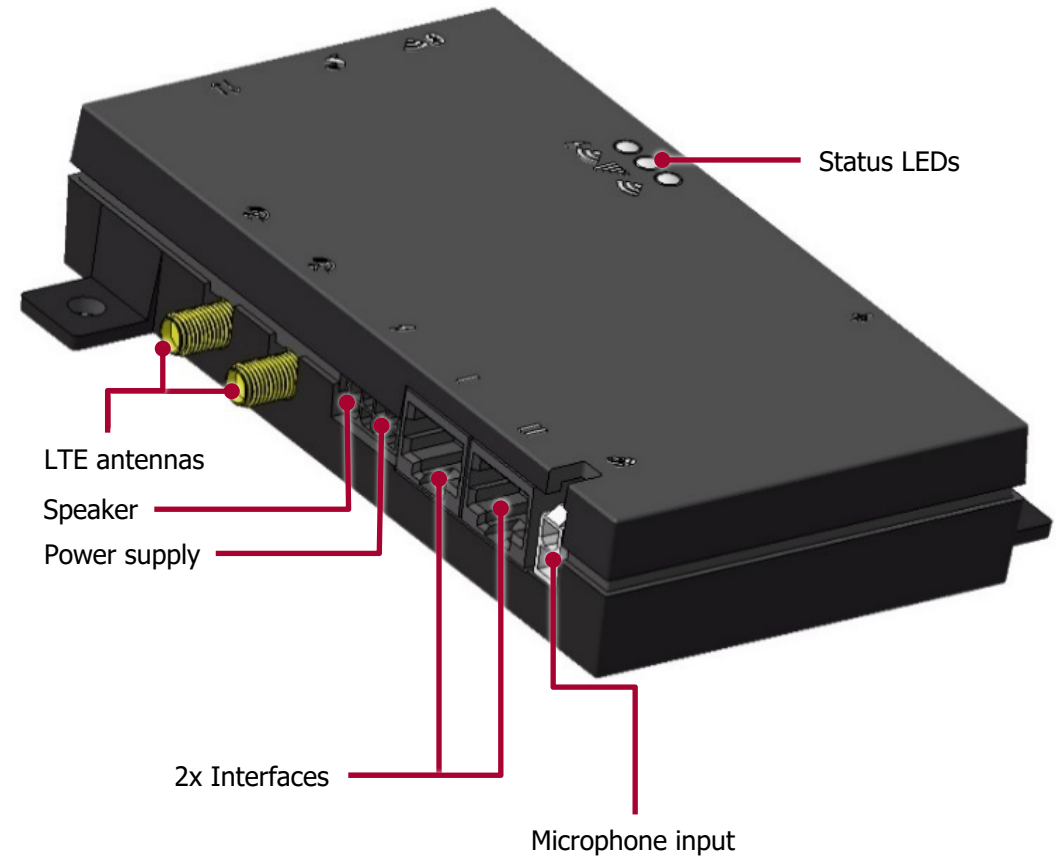
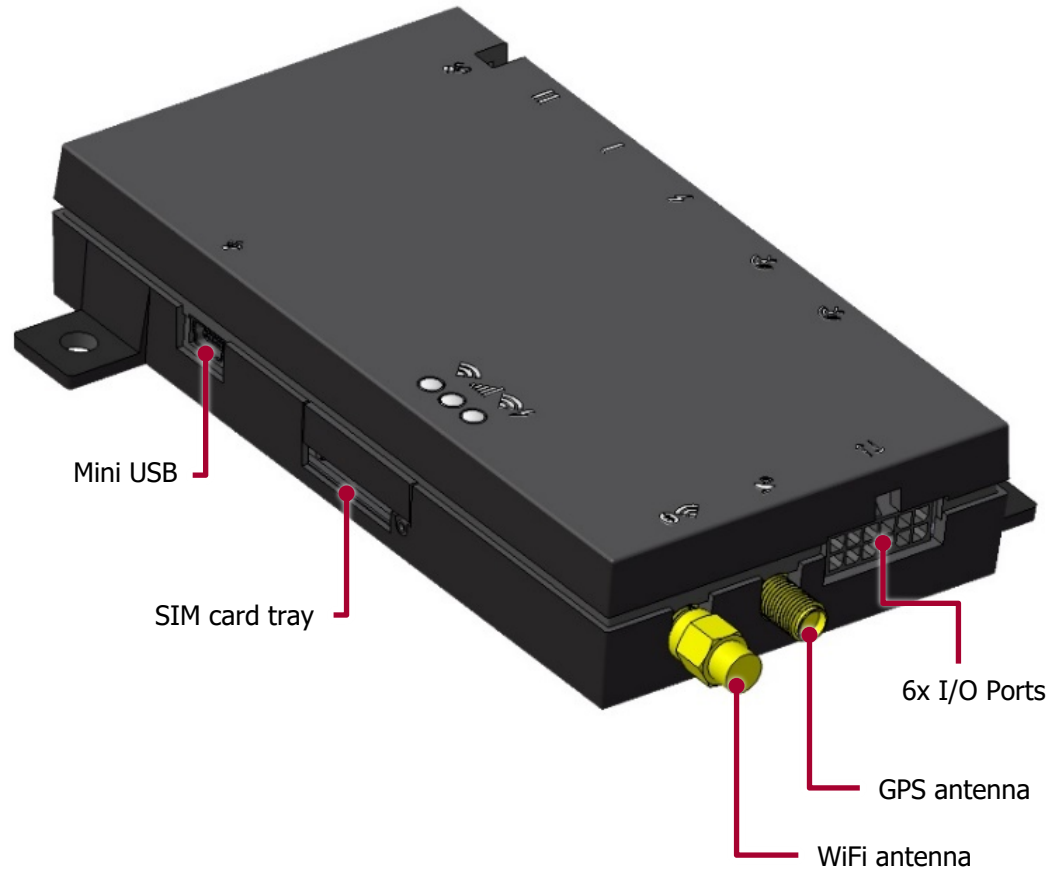
- Stand-alone communication system without handset - PTVoiceBox 4G
- For integration into new and existing systems
- For interference-free voice and data transmission on LTE basis
- Controlled by commands via USB, RS-232, SMS or MQTT



Model for North America and Government Version

- Model for North America at product launch
- Special model for authorities
 - Perfect for use in government vehicles
 - Special functions integrated

PTCarPhone 6	Lieferumfang	Scope of supply
<p>PTCarPhone 6 EU</p> <p>Artikelnummer / Item number: 6609-006-100-51</p> 	<ul style="list-style-type: none"> • LTE-Elektronikbox mit GPS + WiFi (Europa) • Handapparat mit Auflage • Lautsprecher (8 Ohm) • Freisprechmikrofon • Verlängerungskabel für Handapparat (2,5 m) • Anschlusskabelsatz • Kurz- und Installationsanleitung (mehrsprachig) 	<ul style="list-style-type: none"> • <i>LTE electronics box with GPS + WiFi (Europe)</i> • <i>Handset with cradle</i> • <i>Speaker (8 Ohms)</i> • <i>Hands-free microphone</i> • <i>2.5 m extension cord for the handset</i> • <i>Cable set</i> • <i>Quick reference and installation instruc. (multilingual)</i>
<p>PTCarPhone 6 NA</p> <p>Artikelnummer / Item number: 6609-006-101-51</p> 	<ul style="list-style-type: none"> • LTE-Elektronikbox mit GPS + WiFi (Nordamerika) • Handapparat mit Auflage • Lautsprecher (8 Ohm) • Freisprechmikrofon • Verlängerungskabel für Handapparat (2,5 m) • Anschlusskabelsatz • Kurz- und Installationsanleitung (mehrsprachig) 	<ul style="list-style-type: none"> • <i>LTE electronics box with GPS + WiFi (North America)</i> • <i>Handset with cradle</i> • <i>Speaker (8 Ohms)</i> • <i>Hands-free microphone</i> • <i>2.5 m extension cord for the handset</i> • <i>Cable set</i> • <i>Quick reference and installation instruc. (multilingual)</i>



General	
Dimensions (w/ retaining tabs)	approx. 140 x 98 x 26 mm (L x W x H)
Weight	approx. 165 g
Operating voltage	10 V to 32 V
Power consumption	Off: < 0,07 W; Idle: Approx. 1.5 W to 3 W (depending on the connected accessories)
Current consumption	max. 2 A (in hands-free mode)
Transmission power	max. 2 W at 850/900 MHz; max. 1 W at 1800/1900 MHz
SIM card holder	Mini SIM card (2FF)
Supported networks	LTE, UMTS, GSM
Wireless interfaces	WiFi
Storage temperature	-30° C to +80° C
Operating temperature	-20° C to +70° C

Connections	
Antennas	4x SMA (antennas not included) / LTE, WLAN & GPS
Frequency bands	Europe: LTE B1(2100), B3(1800), B7(2600), B8(900), B20(800), B28A(700) / UMTS B1(2100), B3(1800), B8(900) / GSM B3(1800), B8(900) NA: LTE B12(700), B14(70), B4(1700), B2(1900), B5(850), B13(700), B66(1700/2100), B71(600) / UMTS B2(1900), B4(1700), B5(850)
Data transfer	Mini USB connection
Digital I/Os	Connection socket for I/O cable kit, max. current carrying capacity: 150 mA per connection; dielectric strength: 32 V
Microphone	Plug: Molex 5557; sensitivity: 700 mV/Pa (-3 dBV/Pa ± 3 dB) at 8 V/680 Ω
Speaker	Plug: 2 pole Molex; connection at power cable
Power supply	Power cable (permanent plus, ground, ignition)
Interfaces	RS232 with V24 level, USB 2.0

PEI | TEL



Thank you for
your attention.

pei tel Communications GmbH
Rheinstraße 15 A
D-14513 Teltow

www.peitel.de