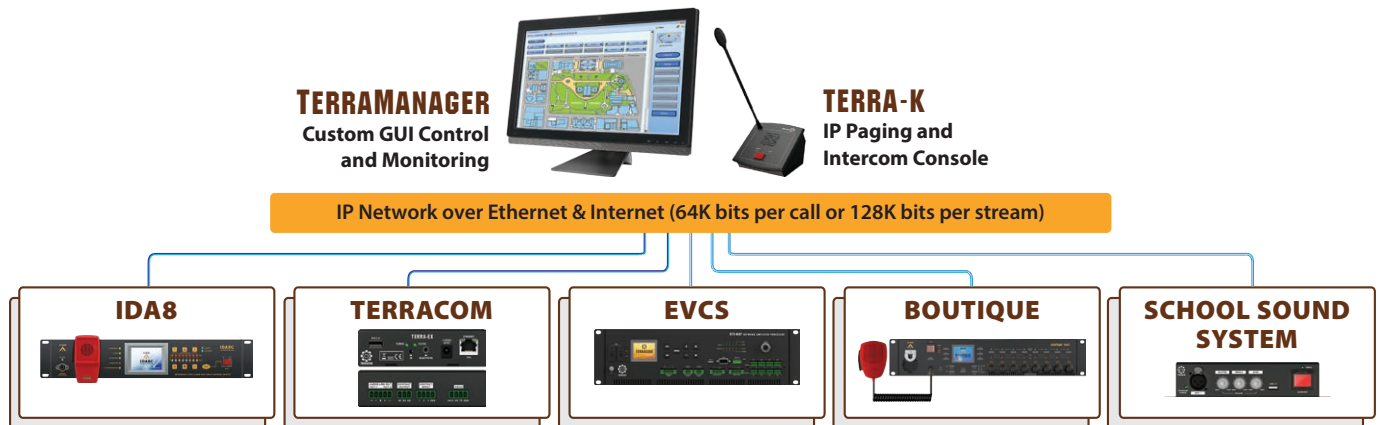


**PAGING • INTERCOM • MUSIC STREAMING • PROGRAM AUDIO ROUTING  
CLASSROOM CALL-IN • BELL SCHEDULING • CONTROL • MONITORING • EMERGENCY MESSAGING**



The TerraManager is an integrated control software, providing GUI components to control and monitor the products from ATEİS and TERRACOM such as IDA8, BOUTIQUE, EVCS, TERRACOM system etc..

The TerraManager can perform call-paging (Unicast/Multicast/Broadcast), full duplex intercom, music streaming, background music routing, message playing, recording, event, bell scheduling, device I/O monitoring, parameter presets, TTS SVE (Text To Speech - Synthetic Voice Engine), volume control (3rd party) and other numerous control functions. Meanwhile, the TerraManager can monitor all zones, list the logs/faults and display the status of the current paging sources.

### FEATURES

- Support TCP, UDP, SIP, RTP and IGMP protocols
- Support paging (Unicast/Multicast/Broadcast), full-duplex intercom, message playing
- Zone button selections, including single zone, group zones
- Multi language tool
- 3rd party control via UDP, TCP and Modbus protocols
- Configurable prerecorded audio sources for zone broadcasting and bell scheduler arrangement
- Support Session Initiation Protocol (SIP)
- Support to upload the audio files which are stored in your PC into the selected IDA8 processor(s), and download the audio files which are stored in IDA8 processors to your PC remotely
- The Central Log function can record the logs of IDA8/BOUTIQUE system, and display the real-time information on Central Log Service software

### APPLICATIONS

#### SIMPLE & MEDIUM-SIZED SYSTEMS

- Stores (restaurant, shopping malls)
- Office/industrial buildings
- University campus or education institution

#### FULLY INTEGRATED LARGE-SCALE SYSTEMS

- Transportation (railway, subway, airport)
- Museums/theme parks/high-rise buildings
- Hotels/churches

### SYSTEM REQUIREMENTS

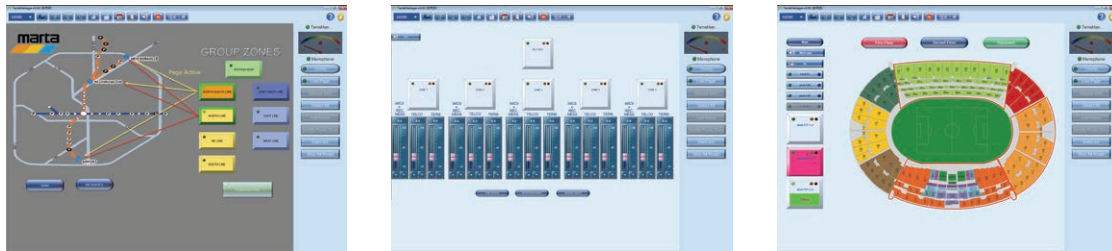
- CPU: at least i5, recommend i7
- Memory: at least 8GB RAM, recommend > 16GB RAM
  - \* Please note 8GB RAM memory is enough for basic configuration, except the following 2 items are present, we shall recommend to use > 16GB RAM
  - When the Image Zone button is in used in the configuration
  - When a number of nodes are using in the configuration (above 100 nodes)
- Hard-Disk: > 500GB
  - Reserve 100GB for TerraManager application and log
- 64-Bit OS: Windows 7 SP1/8.1/10
- VGA card
  - Basic requirement: Any dedicated Graphics Card or Intel® Core™ i7-2600K CPU (or higher) shall require no dedicated Graphics Card
  - Recommend: Nvidia GeForce GT 730 (or higher) or the CPU has built-in Intel® HD Graphics 620 (or higher)
  - \* Please note if the Image Zone button, Fault button or the Blinking Zone Effect function is using in TerraManager, please use the recommended VGA Card.
- Network Card
  - Network bandwidth: > 100Mbps

### SUPPORTED AUDIO CODEC

Function	Supported Audio Codec	Function	Supported Audio Codec
SIP	G.722, MP3, PCM16K	Route	G.722, PCM16K, G.711ulaw
Record	G.722, MP3, PCM16K	Music stream	G.722, MP3, PCM16K
Message	G.722, MP3, PCM16K	Music SHOUTcast	MP3

**INTUITIVE GRAPHICAL INTERFACE**

The easy-to-use and configure TerraManager software is a flexible Windows-based GUI platform that can be configured as a matrix programmable and customizable soft buttons on the screen – or dynamic buttons can be actual graphic images of imported map layout of the physical building, campus, or geographical area – overlaid on image to coincide with the actual page/intercom zones for easy identification and activation. Virtually unlimited panels or screens can be created and navigation is via drop-down menu, “Quick-Link” function buttons and/or programmable Panel Link buttons that can be placed and customized anywhere within the design.



**DEVICE MANAGEMENT**

Node License	Name	Function	IP	Status
Microphone	177		192.168.101.177	ONLINE
INTERCOM	BoutiqueVM		192.168.102.84	ONLINE
INTERCOM	FXO_196		192.168.101.196	ONLINE
INTERCOM	PPIMK		192.168.101.19	ONLINE
INTERCOM	TERRA_SAP		192.168.101.107	ONLINE
INTERCOM	Machine		192.168.102.88	OFFLINE

The BOUTIQUE, IDA8, Terracom and EVCS system can be easily integrated with TerraManger via LAN/WAN for network paging, intercom, control and monitor. Any device on the network can be discovered and be listed in the device management window automatically. The table-structured layout provides the user a clear view of the whole system and monitor the status of each device efficiently.

**HIGHLY CUSTOMIZED AND FLEXIBLE BUTTONS**

The highly customized and flexible button can be configured as various functions including zone selection, message/music playing, background music routing, source selection, 3rd party command string, device logic I/O control and monitor. The zone button displays the status of the fault and evacuation, multiple buttons on one page represents a global view of an area such as a building or a terminal of the airport. If a zone has been occupying a source, it's name will be displayed on the graphic of the button even the user can identify if it is a higher priority source or lower priority source of its color. Furthermore, the text and color of device I/O button LEDs can be customized.

